

MITCHELL SHIRE COUNCIL

Council Meeting Attachment

SUSTAINABLE COMMUNITIES

16 MAY 2016

7.2

59 HIGH STREET - HERITAGE AND DESIGN CONSIDERATIONS

Attachment No: 3

**Examples of retention of historical facades in
modern developments**

Attachment 4

59 High Street, Wallan

Precedent Projects that have incorporated an existing significant heritage structure into a new building or landscaping

Incorporation of an existing significant heritage building into a new building



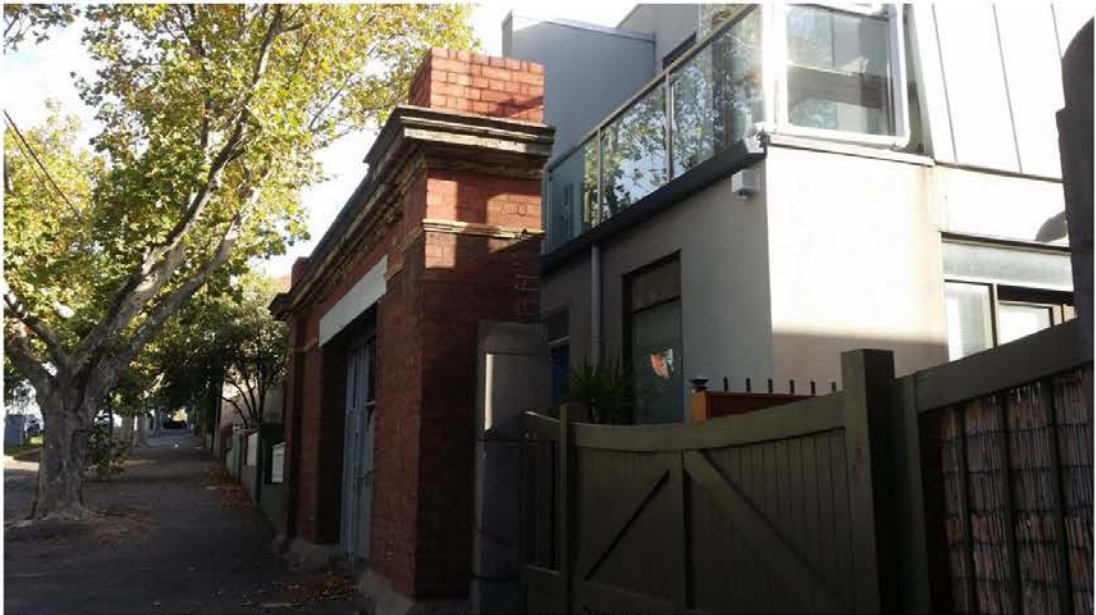
Salvation Army - Victorian Headquarters, Railway Road, Blackburn



Residential Development, Ballarat Street, Yarraville



Newmarket Hotel, Inkerman Street, St Kilda



Heritage façade incorporated into modern development; North Melbourne



Heritage façade incorporated into modern development; North Melbourne



Heritage façade incorporated into modern development; North Melbourne