



Planning Scheme Amendment C151: Kilmore South East Growth Precinct

What is the Mitchell Planning Scheme?

The *Mitchell Planning Scheme* is a document that regulates land use and development throughout Mitchell Shire. The Mitchell Planning Scheme consists of various zones, overlays, state and local planning policies and provisions relating to use and development. A planning scheme amendment proposes to make alterations to the Planning Scheme.

What is the purpose of Planning Scheme Amendment C151?

This amendment proposes to rezone land identified by the *Kilmore Structure Plan 2016* and at Clause 21-11-3 of the *Mitchell Planning Scheme* as within the South-East Growth Precinct from Farming Zone, Rural Living Zone and Public Use Zone to General Residential Zone and amend the extent of the Vegetation Protection Overlay in the precinct. The land is generally bordered Tootle Street, Northern Highway, Wandong Road and Quinns Road and is shown at Figure 1.

Why is the Amendment Required?

The amendment is required to rezone the Kilmore South East Growth Precinct to allow for residential development and will progress delivery of land for active open space and a new primary school.

Kilmore South East Growth Precinct

The *Kilmore Structure Plan 2016* nominates land within the South East Growth Precinct for a new primary school, active open space (sports fields) and shared path to service future residential growth. Rezoning the south east growth precinct will enable delivery of these community facilities and school. Figure 2 shows the high level plan for the South East Growth Precinct.

How do I make a submission to Planning Scheme Amendment C151?

Submissions can be emailed to Council at mitchell@mitchellshire.vic.gov.au or sent to:

Mitchell Shire Council
Strategic Planning Department
Submission to Planning Scheme Amendment C151
113 High Street
Broadford VIC 3658

All submissions need to be provided to Council in writing by close of business on Friday 26 June 2020.

Please note that all submissions received are a public document and can be made available to any person upon request.

What happens if I make a submission?

All submissions are required to be formally considered by Council. In the event that submitter concerns cannot be resolved by Council Officers, Council may refer submissions to an Independent Planning Panel for consideration.

The Planning Panel is appointed by the Minister for Planning and may include a public hearing where all submitters can be heard. The Planning Panel will review each submission individually and provide recommendations to Council and the Minister for Planning.

When will the Planning Panel occur?

A preliminary date for the Planning Panel hearing has been set as follows:

Directions Hearing: Week starting 14 September 2020
Panel Hearing: Week starting 12 October 2020

Contact us:

t: (03) 5734 6200

f: (03) 5734 6222

e: mitchell@mitchellshire.vic.gov.au

w: www.mitchellshire.vic.gov.au

MITCHELL SHIRE COUNCIL



Still have questions?

Council officers are available to discuss the matter on the phone, video conference or email. Please contact the Strategic Planning Team on 5734 6200 or via email on mitchell@mitchellshire.vic.gov.au to discuss the amendment or to book a time for a video conference.

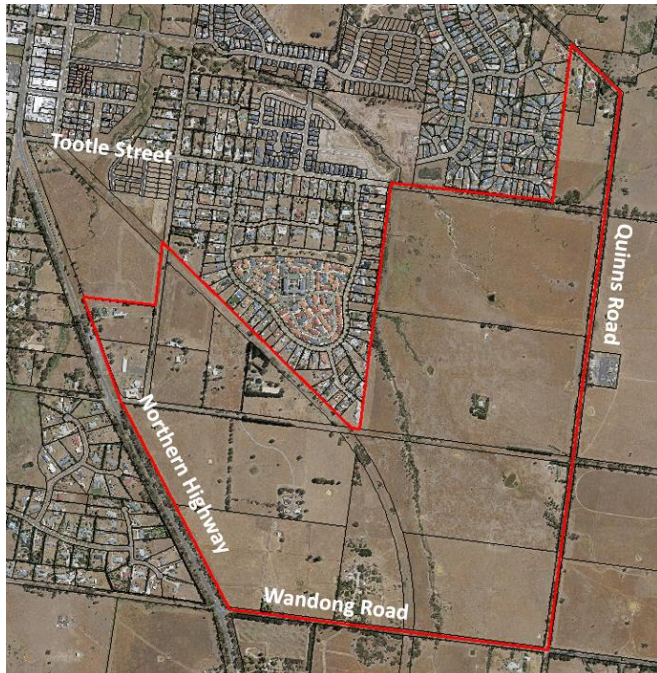


Figure 1: Aerial Photo of rezone area



Figure 2: Extract from the Kilmore Structure Plan showing general location of future active open space, shared paths and primary school

Contact us:

t: (03) 5734 6200

f: (03) 5734 6222

e: mitchell@mitchellshire.vic.gov.au

w: www.mitchellshire.vic.gov.au

MITCHELL SHIRE COUNCIL

