



Planning Scheme Amendment C138: 49 Emily Street, and part of 17 High Street, Seymour

What is the *Mitchell Planning Scheme*?

The *Mitchell Planning Scheme* is a document that regulates land use and development throughout Mitchell Shire. The Mitchell Planning Scheme consists of various zones, overlays, state and local planning policies and provisions relating to use and development. A planning scheme amendment proposes to make alterations to the Planning Scheme.

What is the purpose of Planning Scheme Amendment C138?

Proposed Planning Scheme amendment C138 seeks to rezone land at above address from General Residential 1 Zone (GRZ1) to Commercial 2 Zone (C2Z).

Why is the Amendment Required?

The amendment is required to align the zoning of land occupied by an existing motor vehicle yard with the ownership of the land. This minor rezoning to align commercial motor vehicle yard use and ownership with correct zoning will provide certainty for existing land use and business operation.

How do I make a submission to Planning Scheme Amendment C138?

All submissions need to be provided to Council in writing by close of business on **Monday 29 April 2019**.

Submissions can be emailed to Council at mitchell@mitchellshire.vic.gov.au or sent to:

Mitchell Shire Council
Strategic Planning Department
Submission to Planning Scheme Amendment C138
113 High Street
Broadford VIC 3658

Please note that all submissions received are a public document and can be made available to any person upon request.

What happens if I make a submission?

All submissions are required to be formally considered by Council. In the event that submitter concerns cannot be resolved by Council Officers, Council may refer submissions to an Independent Planning Panel for consideration.

The Planning Panel is appointed by the Minister for Planning and may include a public hearing where all submitters can be heard. The Planning Panel will review each submission individually and provide recommendations to Council and the Minister for Planning.

When will the Planning Panel occur?

A preliminary date for the Planning Panel hearing has been set as follows:

- **Directions Hearing:** Week commencing 15 July 2019
- **Panel Hearing:** Week commencing 12 August 2019

Where can I find out more information?

All Planning Scheme Amendment C138 documentation can be viewed by visiting Council's website at <https://www.mitchellshire.vic.gov.au/planning-and-building/strategic-planning/planning-scheme-amendments> or in hardcopy at Offices located at:

- Seymour Library, 125 Anzac Avenue, Seymour
- Wallan Planning and Building Office, 4A & 4B (Level 1), 61 High Street, Wallan

Contact us:

t: (03) 5734 6200
f: (03) 5734 6222
e: mitchell@mitchellshire.vic.gov.au
w: www.mitchellshire.vic.gov.au



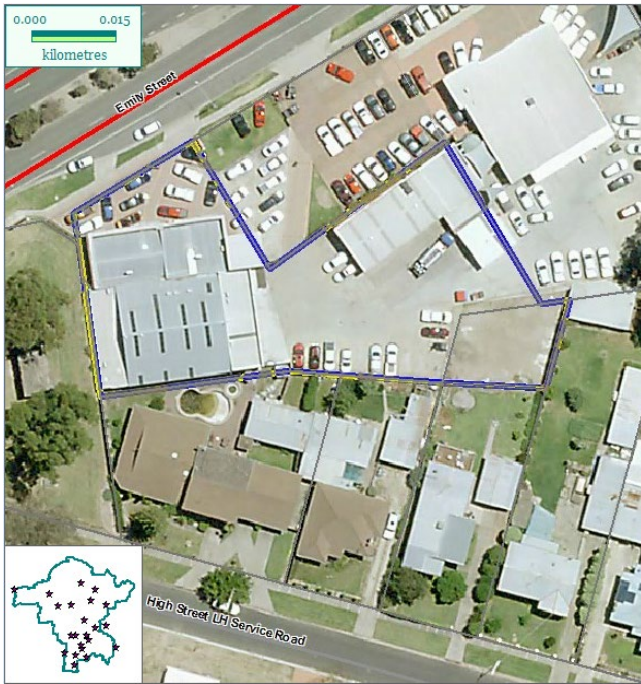


Figure 1: Aerial Photo of site

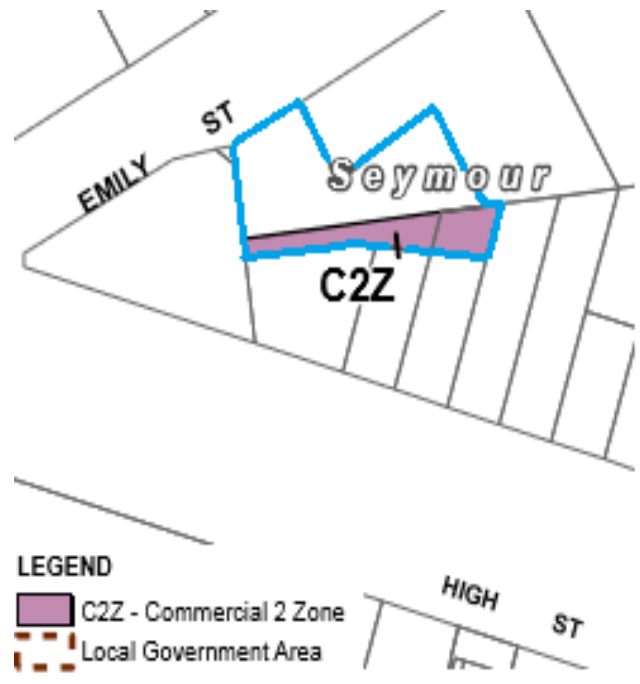


Figure 2: Proposed rezone area from GRZ1 to C2Z (Purple colour)

Contact us:

t: (03) 5734 6200

f: (03) 5734 6222

e: mitchell@mitchellshire.vic.gov.au

w: www.mitchellshire.vic.gov.au

MITCHELL SHIRE COUNCIL

